



# Compact Wood Stove with Heat Shield

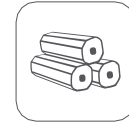
Marka: Beestove | Model: MZ01



Heat Output  
(Nominal - Minimum)  
10 kW



Fuel Type: Wood



Fuel Type: Briquette

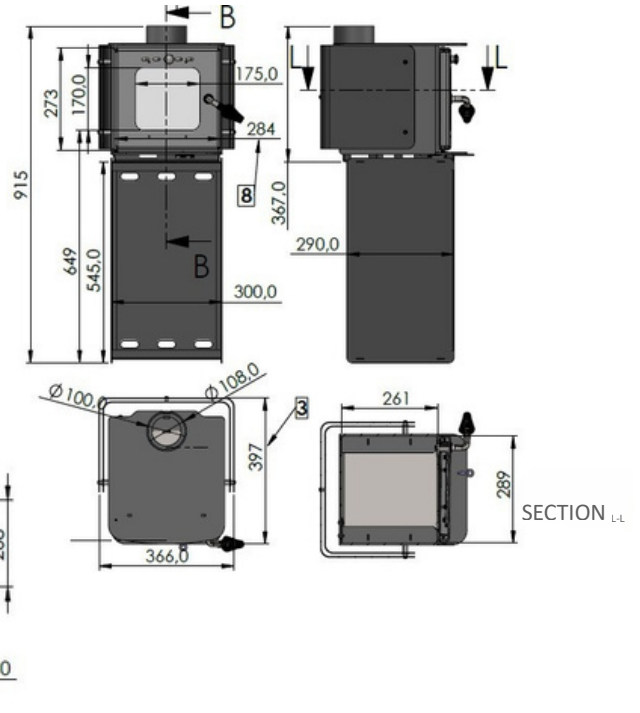


Product  
Weight  
49.3



Chimney  
Diameter  
100mm

With a heat output capacity of 3 kW, this compact stove features ideal dimensions for small residential spaces. Equipped with side and rear heat shields, it significantly reduces the required safety clearance from walls. The stove body is constructed from heavy-duty 5mm thick sheet metal. It includes a convenient wood drying compartment located at the base. A specially designed spring handle ensures the grip remains cool to the touch, allowing for safe and comfortable operation even during peak combustion. For maximum durability, the entire unit is coated with high-temperature resistant, smokeless black German Senotherm paint.



Omtay Metal Product Design and Manufacturing – Atilla Aytürk  
Office Address: Gümüštepe Mh. 759. Sk. No: 9-1 Nilüfer / Bursa / Turkey  
Factory Address: Minareliçavuş Mh. Nilüfer Organized Industrial Zone N.115 Sk. No: 18 Nilüfer / Bursa / Turkey  
Phone: +90 532 426 31 51