



High-Efficiency Fireplace Stove

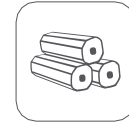
Brand: Beestove | Model: MZ02



Heat Output
(Nominal - Minimum)
5 kW



Fuel Type: Wood



Fuel Type: Briquette

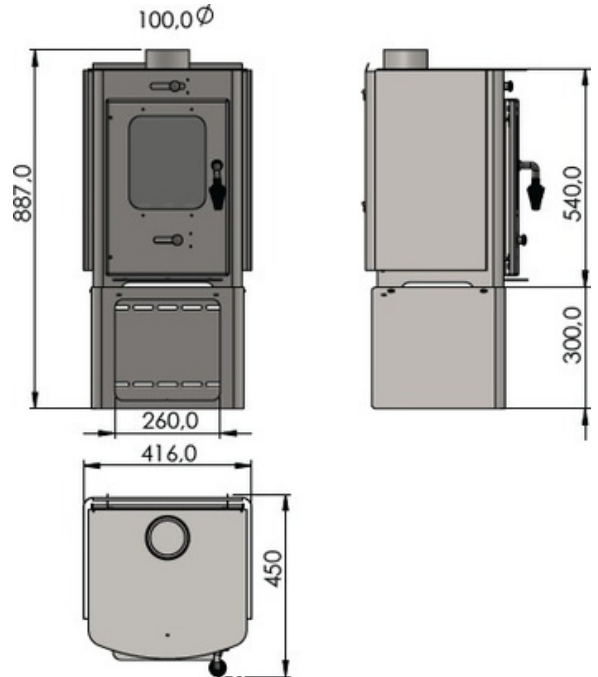


Product
Weight
73.7



Chimney
Diameter
100mm

With a heat output capacity of 5 kW, this stove features ideal dimensions for small residential spaces. The interior of the combustion chamber is fully lined with premium firebricks for optimal heat retention. Equipped with side and rear heat shields, it significantly reduces the required safety clearance from walls. It includes a convenient wood drying compartment located at the base. A specially designed spring handle ensures the grip remains cool to the touch, allowing for safe and comfortable operation even during peak combustion. For maximum durability, the entire unit is coated with high-temperature resistant, smokeless black German Senotherm paint.



Omtay Metal Product Design and Manufacturing – Atilla Aytürk
Office Address: Gümüştepe Mh. 759. Sk. No: 9-1 Nilüfer / Bursa / Turkey
Factory Address: Minareliçavuş Mh. Nilüfer Organized Industrial Zone N.115 Sk. No: 18 Nilüfer / Bursa / Turkey
Phone: +90 532 426 31 51